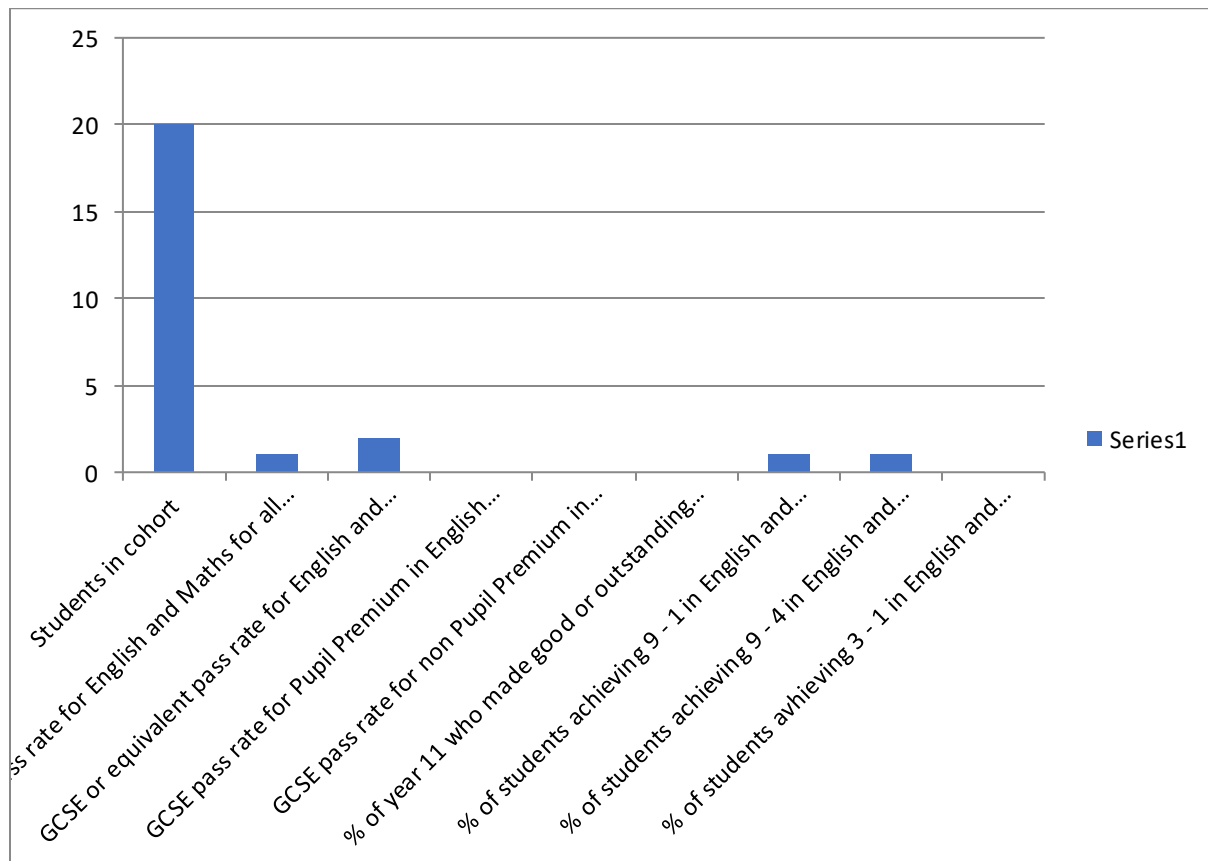


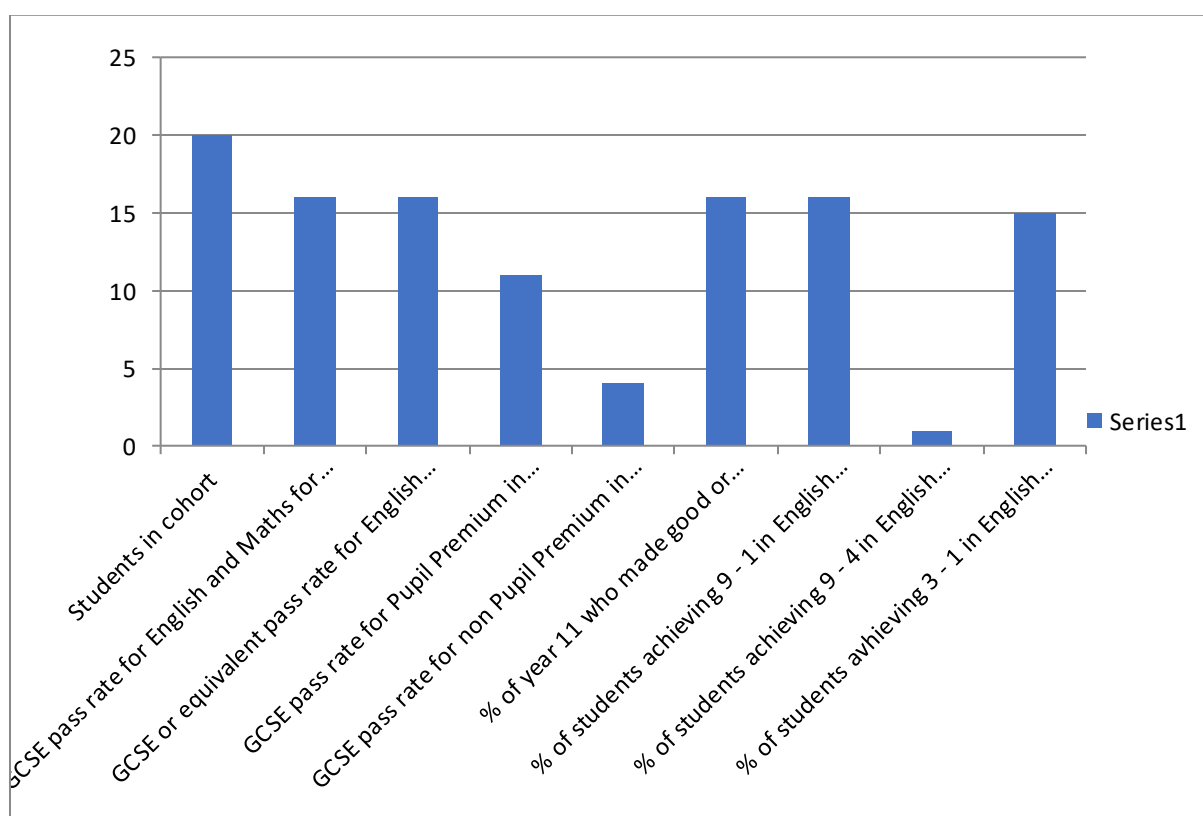


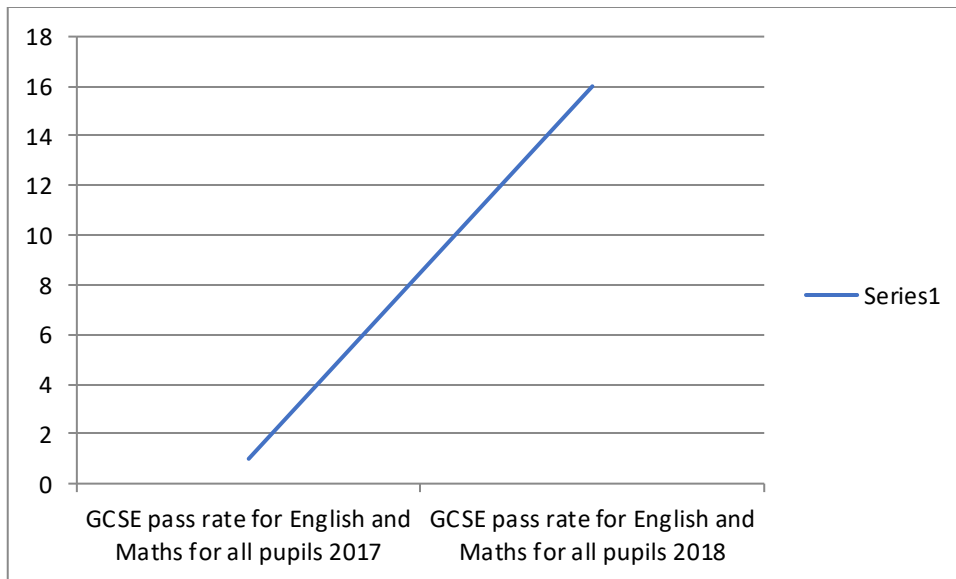
**Exam Results 2017/2018**

<b>Maths and English 2017 Baseline GCSE results</b>	<b>Number of students</b>	<b>Percentage</b>
Students in cohort	20	
GCSE pass rate for English and Maths for all pupils 2017	1	5%
GCSE or equivalent pass rate for English and Maths for all pupils	2	10%
GCSE pass rate for Pupil Premium in English and Maths	0	0
GCSE pass rate for non Pupil Premium in English and Maths	0	0
% of year 11 who made good or outstanding progress in English and Maths	0	0
% of students achieving 9 - 1 in English and Maths	1	5%
% of students achieving 9 - 4 in English and Maths	1	5%
% of students achieving 3 - 1 in English and Maths	0	0



Maths and English 2018 Baseline GCSE results	Number of students	Percentage
Students in cohort	20	
GCSE pass rate for English and Maths for all pupils 2018	16	80%
GCSE or equivalent pass rate for English and Maths for all pupils	16	80%
GCSE pass rate for Pupil Premium in English and Maths	11	67%
GCSE pass rate for non Pupil Premium in English and Maths	4	25%
% of year 11 who made good or outstanding progress in English and Maths	16	80%
% of students achieving 9 - 1 in English and Maths	16	80%
% of students achieving 9 - 4 in English and Maths	1	6%
% of students achieving 3 - 1 in English and Maths	15	94%





**Graph showing the increase in pass rates in both English and Maths from 2017 to 2018**