

OUR COMMITMENT TO STUDENT AND FAMILY WELL-BEING

At Newbridge School, we prioritise the well-being of our students and their families by focusing on safeguarding and mental health initiatives.

We also strive to connect you with essential family support services.

Whether you need counselling, workshops, or tailored assistance, we are committed to guiding you towards the most fitting solution.

URGENT HELP & CRISIS SUPPORT

If someone is in immediate danger, please call

Emergency Services

999

For urgent mental health support at any time, day or night

NHS Urgent Mental Health Helpline for Herefordshire and Worcestershire

0800 196 9127

(Available 24/7)

To reach out for urgent mental health advice (that does not constitute to an emergency)

NHS 111

111

STUDENT AND FAMILY WELL-BEING

For more information visit: www.newbridgeschool.co.uk



SAFEGUARDING & CHILD PROTECTION



If you have any concerns regarding a child's safety or well-being, confidential advice and support are readily accessible. The NSPCC and Worcestershire's Children's Social Care (Family Front Door) can provide guidance and take necessary actions if a child is in danger.

These organisations are dedicated to ensuring the protection and welfare of children.

NSPCC - REPORTING CONCERNS

Report Abuse

<https://www.nspcc.org.uk/keeping-children-safe/reporting-abuse/>

WORCESTERSHIRE FAMILY FRONT DOOR

Refer to Children's Social Care

<https://www.worcestershire.gov.uk/council-services/childrens-social-care/refer-childrens-social-care>

SAFEGUARDING & CHILD PROTECTION

For more information visit: www.newbridgeschool.co.uk/safeguarding



MENTAL HEALTH AND EMOTIONAL WELL-BEING



Children and young people may need support if they are experiencing anxiety, feelings of sadness, being overwhelmed, or difficulties in coping. The NHS and CAMHS services offer advice, information, and assistance for children, young people, and their parents/carers.

CAMHS - GETTING ADVICE

<https://camhs.hacw.nhs.uk/getting-advice>

CAMHS - FIND SUPPORT

including services available before or instead of CAMHS

<https://camhs.hacw.nhs.uk/find-support>

CAMHS - PARENTS AND CARERS

<https://camhs.hacw.nhs.uk/parents-and-carers>

MENTAL HEALTH CRISIS SUPPORT FOR YOUNG PEOPLE (24/7)

For individuals in need of immediate emotional support. free and confidential help is accessible at any time. They can reach out to someone right away through the following services, which offers crisis intervention and emotional support

CHILDLINE

<https://childline.org.uk>

0800 1111

SHOUT

text SHOUT or YM to

85258

HOPELINE 24/7

for those under 35

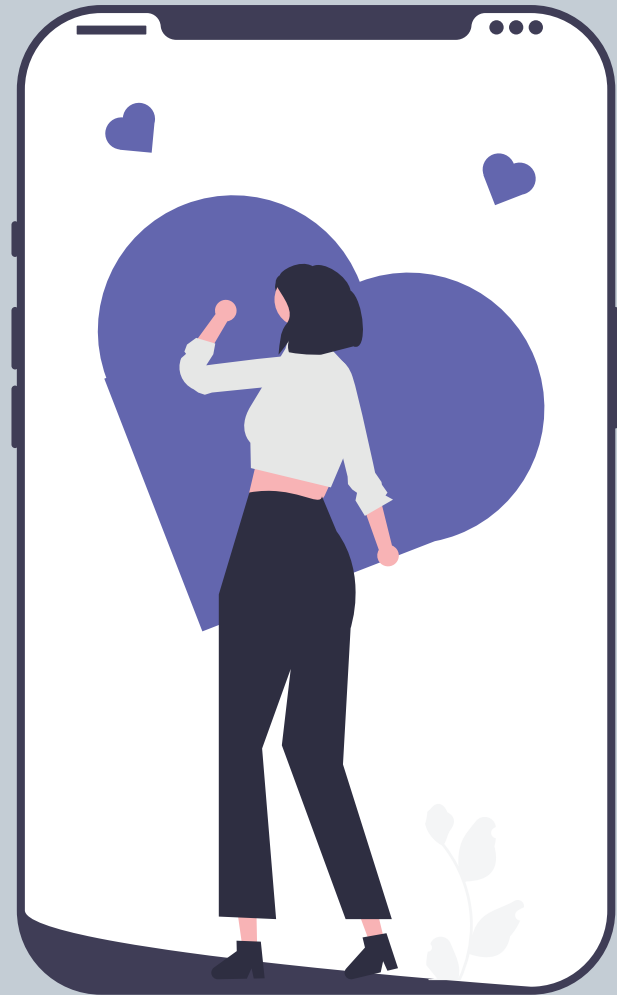
0800 068 4141

SAMARITANS

116 123

ONLINE SAFETY & EXPLOITATION

If you have concerns about online grooming, exploitation, or the sharing of images online, specialised assistance is accessible.



CEOP

CEOP provides advice and enables you to report concerns regarding online abuse or grooming

<https://ceop.police.uk/Safety-Centre/>

CHILDLINE

Report Remove helps young individuals safely and confidentially remove nude or semi-nude images

<https://childline.org.uk/info-advice/bullying-abuse-safety/online-mobile-safety/report-remove>

SUPPORT FOR PARENTS & CARERS

Parenting can be tough, but support is available when challenges arise. The following services offer confidential advice and guidance on behaviour, relationships, mental health and family life.

NSPCC - ASSISTANCE FOR PARENTS

<https://www.nspcc.org.uk/keeping-children-safe/support-for-parents/>

FAMILY LIVES (PARENTLINE)

<https://www.familylives.org.uk>

KEEPING FAMILIES SAFE - IMPORTANT SUPPORT SCHEMES

SARAH'S LAW

Enables parents and carers to inquire with the police whether someone who interacts with their child has history of sexual offences against children

CLARE'S LAW

Allows individuals or professionals to check with the police if a partner has a history of abusive behaviour, aiming to reduce risk and enhance safety



HOW NEWBRIDGE SCHOOL CAN HELP

If you have any concerns regarding your child or you think your family could use extra support, we invite you to connect with a member of our school staff.

We offer early assistance and guidance, working alongside other services to guarantee that children and families receive the necessary support at the right time.

For more information, please visit the supporting families section of our school website.



WWW.NEWBRIDGESCHOOL.CO.UK